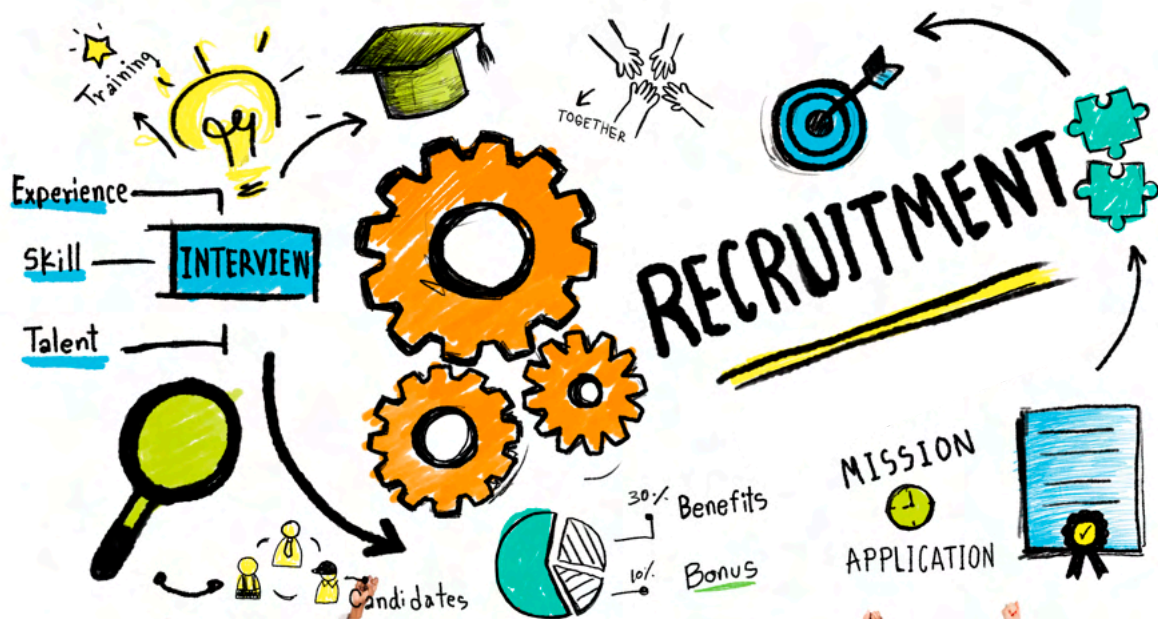


Support for employers



inclusivity · diversity · productivity

Why work with us?

Sixteen provides a range of services to employers, helping you get the right person for the job first time, at no cost to you.

This means you can:

- Save time and money on recruitment
- Secure motivated, dedicated and hard-working staff
- Bring new talent and experience into your workplace
- Keep hold of great employees

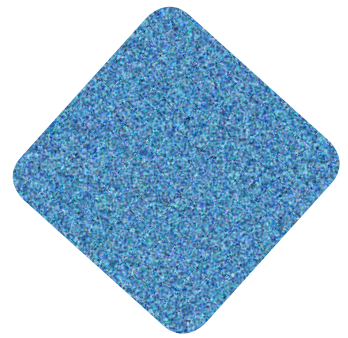
Who are we?

We are Sixteen Cooperative Ltd, a supported employment agency and social enterprise. Supported employment is a specialist approach for supporting disabled people into work, designed to find you the right person for the job and then to help them settle in.

We are specialist job coaches, employment support workers, trainers and educators. We understand the attributes and opportunities that people with a learning difficulty bring and the business needs of the employer.

We partner with businesses and individuals to:

- unlock potential
- raise aspirations
- create sustainable employment
- bring innovation to the workplace
- lead the way in inclusivity



What do we do?

We help employers and jobseekers navigate the recruitment process, providing support and practical guidance along the way.

We:

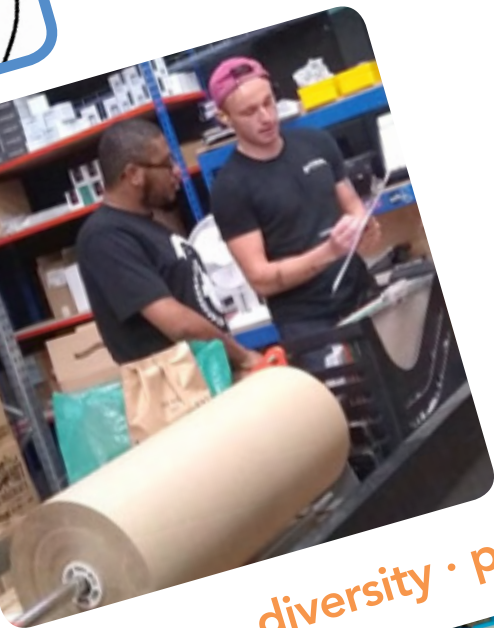
- work with hundreds of local and nationwide employers to understand their needs
- work with each job-seeker, getting to know their skills, interests and aspirations
- identify sustainable employment opportunities
- match job seekers to the business requirements of the employer
- provide on the job training for new recruits to learn the role
- deliver ongoing support for both the employer and the employee
- facilitate training in disability awareness and government schemes

Our job seekers

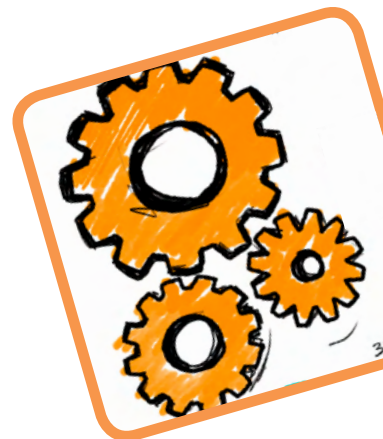
With the right support, a learning difficulty is no barrier to employment. Sixteen's job seekers have the relevant skills and aptitude to bring to your organisation.

Our job seekers are:

- skilled
- hard-working
- loyal
- enthusiastic



inclusivity . diversity . productivity



*'Sixteen provided me with the confidence
and reassurance to take on a staff member
with a learning difficulty.'*

Contact us

If you would like to talk to Sixteen
about our services, please contact us:

Email: admin@sixteencoop.co.uk

Facebook: @Sixteencoop

Website: www.sixteencoop.co.uk

